



Smart Dimmers, Timers & USB Chargers Product Catalogue



The CABAC S-Click Smart Switch Range

The S-Click™ range is simple to install, easy to use and creates a new, modern look for your home.

The range includes solutions for all aspects of your environment, including charging for smart phones, tablets and portable USB devices.

Smart Switch – Every home deserves the best!



Contents

- Smart Switch 4
- Blue & Black Label Devices 5
- Dimmers 6
- Timers 10
- Switches & Remote Buttons 12
- Wall Timers, USB Chargers & Outdoor Switches 13
- 5W USB Charger 2-Wire 14
- Sunset Switch 15
- Bluetooth Digital Time Switch 16
- S-Click App 17
- Ripple Filters & Signal Frequency 18
- Accessories 19

Smart Switch

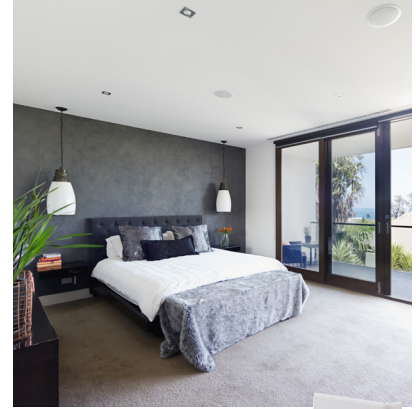
Every home deserves the best



Timers, Sensor and Relay Mechs



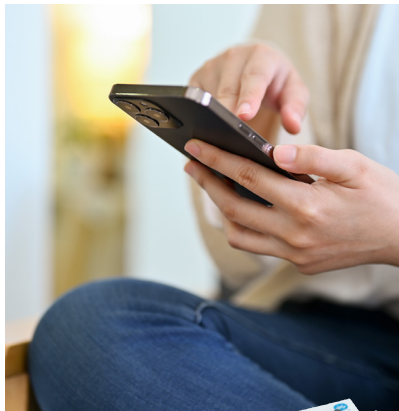
Dimmers



Wall Timers



Outdoor Switches



Digital Time Switches



USB Chargers



All of our S-Click products are compatible with HPM, Trader, Zetr, Clipsal and Voltex wall plates.

Blue Label Devices

Compatible with HPM, Trader, Zetr, Clipsal and Voltex wall plates



Black Label Devices

Compatible with Clipsal Saturn wall plates





SUBTLE. STYLISH. SOPHISTICATED.

Introducing the NEW CABAC
PHASE BALANCED
LED DIMMER

PART No. DMME





PHASED BALANCED LED DIMMER

Part No. DMME

Features

- Wide dimming range, with superior LED lamp compatibility
- Rugged performance: Over Current, Over Voltage, and Over Temperature protection
- Patented ripple tone rejection for reduced flicker when dimming
- Smooth over mould knob design with 'infinity' back-lit and edge-lit feature
- Phase Balanced Technology - minimising flicker and extending load life (PBT)
- True Load Compatibility - 250W LED to ensure greater lamp compatibility over entire dimming range
- Flexible wire exit - side or back for easier product installation
- Off grid compatibility - Stable dimming on inverters and generators
- Start-up Indicator pulse to indicate power on





Dimmers

S-CLICK ROTARY DIMMERS

ROTARY SWITCH DIG DIMMER 2-W 240V 350V

Unit: EA Qty: 1



Part No. HNS620DT

- Rotary digital dimmer and push button 'ON/OFF' switch in one - perfect for dimmable LED lighting
- Suits HPM, Clipsal, Voltex and Traders wall plates with knobs
- World's lowest standby power - 100mW
- Patented ripple tone rejection
- Also suitable with PDL 600 Series, use our adaptor HNSPDLCONV



ROTARY DIG DIMMER 2-WIRE 240V 350V

Unit: EA Qty: 1



Part No. HNS630DT

- Rotary digital dimmer - perfect for dimmable LED lighting
- Suits HPM, Clipsal, Voltex and Traders wall plates with knobs
- Separate 'on/off' switch required
- Compatible with S-Click 3-Wire timers and switches
- Also suitable with PDL 600 Series, use our adaptor HNSPDLCONV



ROTARY DIG DIMMER SW S-PREMIUM 240V 350W

Unit: EA Qty: 1



Part No. HNS626DT

- Rotary digital dimmer and push button 'ON/OFF' switch in one
- Suits Clipsal Saturn and Saturn Zen style wall plates
- Patented ripple tone rejection
- Perfect for dimmable LED lighting



ROTARY DIG DIMMER S-PREMIUM 240V 350W

Unit: EA Qty: 1



Part No. HNS636DT

- Rotary digital dimmer - perfect for dimmable LED lighting
- Suits Clipsal Saturn and Saturn Zen style wall plates
- Separate 'on/off' switch required
- Compatible with S-Click 3-wire timers and switches





S-CLICK PUSH BUTTON

PUSH BUTTON DIGITAL DIMMER 2-W 240V 350W

Unit: EA Qty: 1



Part No. HNS610DT

- Push Button Digital Dimmer™ and ON/OFF switch in one - perfect for dimmable LED
- Suits HPM, Clipsal, Voltex and Traders wall plates
- Multi-way dimming and ON/OFF using S-Click HNS020RB Remote Button
- Patented ripple tone rejection
- Buttons Included



DUAL SWITCHING DIMMER KIT - 610DT

Unit: EA Qty: 1



Part No. HNS610SDK

- Multi-way Dimming and ON/OFF over standard wiring
- Digital Dimmer and ON/OFF switch in one, perfect for dimmable LED
- HNS610DT Push Button Digital Dimmer
- HNS020RB Remote Button
- Please note that this product is not suitable for fans or motors



PUSH BTN DIG DIMMER S-PREMIUM 240V 350W

Unit: EA Qty: 1



Part No. HNS616DT

- Push Button Digital Dimmer™ and ON/OFF switch in one - perfect for dimmable LED
- Suits Clipsal Saturn and Saturn Zen style wall plates
- Multi-way dimming and ON/OFF use S-Click HNS020RB Remote Button
- Wider range - Deep dimming to zero on most lamps
- Patented ripple tone rejection





Timers

S-CLICK MECH TIMERS 3 WIRE

MINUTE MECH TIMER 3-WIRE 240V 5A

Unit: EA Qty: 1



Part No. HNS440TM

- 2-in-1 switch that automatically turns off after a programmed time
- Time delay from 1-59 minutes, in minute increments
- Setting retained even after loss of power
- Can power fans, motors, pumps, contactors and inductive loads
- Ability to use as a follow on fan



HOUR MECH TIMER 3-WIRE 240V 5A

Unit: EA Qty: 1



Part No. HNS450TM

- 2-in-1 power switch that automatically turns off after a programmable time
- Time delay from 1-24 hours, in hour increments
- Setting retained even after loss of power
- Can power fans, motors, pumps, contactors and inductive loads



MINUTE TIMER S-PREMIUM 3-WIRE 240V 5A

Unit: EA Qty: 1



Part No. HNS446TM

- 2-in-1 power switch that automatically turns off a programmed time
- Time delay from 1-30 minutes, in minute after increments
- Setting retained even after loss of power
- Can power fans, motors, pumps, contactors and inductive loads
- Suits Clipsal Saturn and Saturn Zen style wall plates



HOUR TIMER S-PREMIUM 3-WIRE 240V 5A

Unit: EA Qty: 1



Part No. HNS456TM

- 2-in-1 power switch that automatically turns off after a programmed time
- Time delay from 1-24 hours, in hour increments
- Setting retained even after loss of power
- Can power fans, motors, pumps, contactors and inductive load
- Suits Clipsal Saturn and Saturn Zen style wall plates





S-CLICK MECH TIMERS 2 WIRE

MINUTE MECH TIMER 2-WIRE 240V 1.7A

Unit: EA Qty: 1



Part No. HNS410TM

- 2-in-1 light switch that automatically turns off after a programmed time
- Time delay from 1-59 minutes, in minute increments
- Setting retained even after loss of power
- Can be retrofitted to most installed lights

smart switch
TECHNOLOGY



HOURLY MECH TIMER 2-WIRE 240V 1.7A.

Unit: EA Qty: 1



Part No. HNS420TM

- 2-in-1 light switch that automatically turns off after a programmed time
- Time delay from 1-24 hours, in hour increments
- Setting retained even after loss of power
- Can be retrofitted to most installed lights

smart switch
TECHNOLOGY





Switches & Remote Buttons

REMOTE BUTTONS

REMOTE BTN FOR DIMMERS AND 3W TIMERS

Unit: EA Qty: 1



Part No. HNS020RB

- Suits the S-Click HNS610DT 2-wire dimmer only
- Suits S-Click HNS440TM, HNS450TM and HNS460SW 3-Wire Timers only
- Push Buttons included - suits Clipsal and HPM Style wall plates
- LED Indicator Colour: White

S-Click smart switch TECHNOLOGY



REMOTE BTN PREM DIMMERS AND 3W TIMERS

Unit: EA Qty: 1



Part No. HNS026RB

- Suits the S-Click S-Premium HNS616DT digital dimmer only
- Suits S-Click S-Premium HNS446TM and HNS456TM 3-wire timers only
- Suits Clipsal Saturn and Saturn Zen wall plates
- LED Indicator colour: Blue

S-Click smart switch TECHNOLOGY



ON/OFF MECHS

ELECTRONIC ON OFF MECH SW 2-W 240V 1.7A

Unit: EA Qty: 1



Part No. HNS430SW

- Electronic 'on/off' light switch with LED indicator
- Quick tap turn 'on' - quick tap turn 'off'
- Can be retrofitted to most installed lights

S-Click smart switch TECHNOLOGY



ELECTRONIC ON OFF MECH SW 3-W 240V 5Av

Unit: EA Qty: 1



Part No. HNS460SW

- Electronic 'on/off' power switch with LED indicator
- Quick tap turn 'on' - quick tap turn 'off'
- Can power fans, motors, pumps, contactors and inductive loads

S-Click smart switch TECHNOLOGY



Wall Timers, USB Chargers & Outdoor Switches

S-CLICK WALL TIMERS

WALL TIMER SWITCH 230VAC 10A

Unit: EA Qty: 1



Part No. HNS210TD

- Designed for high power applications like motors, fans and pumps for pools and spas
- Two modes available - timer switch and restart timer switch
- High current 10A timer switch



ADVANCED WALL TIMER 230VAC 10A

Unit: EA Qty: 1



Part No. HNS220TD

- Designed for high power applications like motors, fans and pumps for pools and spas
- Two modes available - timer switch and restart timer switch
- Flexible, high current 10A, feature rich timer switch
- Can switch 8A of motor load



S-CLICK USB CHARGERS

5W USB CHARGER 2WIRE 5.2V 1A

Unit: EA Qty: 1



Part No. HNS070UC

- The HNS070UC suits Apple, Samsung and all other smartphones, tablet brands or portable USB devices
- Fit up to 6x USB chargers in 1x wall plate
- High efficiency, only 50mW standby power
- Suits CABAC, Clipsal, HPM and Legrand style wall plates
- Bezels included



CABAC SUNSET SWITCH

SWITCH SUNSET WEATHERPROOF 16A IP66

Unit: EA Qty: 1



Part No. HSC110SS

- Switches 16A load off when not required in daylight, with many other programmable features
- 4 in 1 patented design: Standard, Timer, ECO & Real Time modes
- Pre-configured at factory for quicker installation time
- Heavy-duty brass terminals
- Suitable for retrofitting to HPM base





5W USB Charger 2-Wire

Part No. HNS070UC

What are the Benefits of a 1A Charger?

The HNS070UC has been designed to safely charge the greatest number of devices in a small space and is perfect for charging devices overnight. Using a 1A charger maintains a shallow charging regime that helps protect the health of the lithium-ion batteries found in smart phones and tablets. The best part is that, because cell phone manufacturers limits the phone charge rate and the charge rate is not linear, iPhones will still charge in about 3 hours from dead zero no matter what charger you use.

Features

- Suits Apple™, Samsung™ and all other smartphones, tablet brands or portable USB devices
- Fit up to six (6) USB Chargers in 1 wall plate
- Charge your tablet overnight
- High efficiency, only 50mW standby power
- Requires Neutral
- Compensates for cable losses
- Suits a wide range Australian wall plates including Clipsal 2000 Series™, C2000™, Saturn™ Data, Slimline® Clipsal Standard, HPM Excel and Excel Life - bezels included
- Compatible with HPM/LEGRAND, CLIPSAL / Schneider / PDL, TRADER, ZETR and VYNCO wall plates.

NOTE: The HNS070UC is designed to charge portable devices with an internal battery. It should not be used as a continuous use power supply for devices without a battery.



5W USB
Charger 2-WIRE

DESIGNED AND
ENGINEERED
IN AUSTRALIA





Sunset Switch Weatherproof 16A IP66 with Real Time Mode

Part No. HSC110SS

The Sunset Switch is used to switch outdoor lights (or indoor lights when applicable) off when they are not required in daylight. In its most basic form, the unit senses outdoor light levels and switches a relay on and off, thus turning the lights wired to it on or off. Traditionally the lights would turn on during sunset, therefore it is commonly known as a Sunset Switch.

Features

- 4 in 1 patented design
- Easy mode and timer programming using internal DIP switches
- Can be programmed to turn off at a fixed time every day - real time mode
- Industry compatible form factor suitable for retrofitting to HPM base
- IP66 rated product for worry free outdoor installations
- Heavy-duty brass terminals
- Max rated load 3840W (incandescent and PCB)
- 15 minute step timer range, up to 15.75 hours (or day break)
- All required parts are supplied including glands and DIP switch tool
- Quick installation with a short warm up time
- Higher power relay - fewer units are needed to control more lights
- Descriptive internal label for easy installation and set-up
- Turn on/off delay stops inadvertent switches.



Four Modes:



WATERPROOF
16A Sunset Switch

Mode 1
Standard

Mode 2
Timer

Mode 3
ECO

Mode 4
Real Time



Bluetooth Single Module Digital Time Switch

Part No. HNS810TM

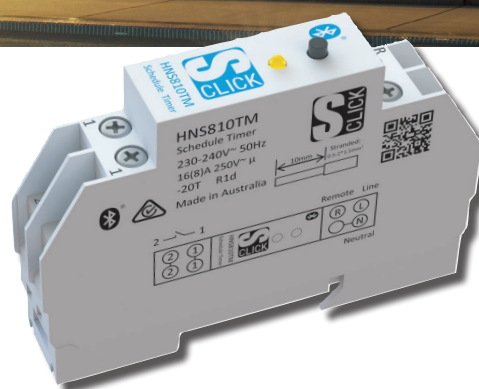
Operating Conditions

- Operating Voltage: 230-240Va.c. 50Hz
- Operating Temperature: -20°C to +55°C
- Certified Standard: IEC 60730-1, IEC 60730-2-7, AS/NZS 4268
- Current Capacity (Resistive): 16A
- Current Capacity (P.F. 0.6): 8A (Inductive/Capacitive)
- Output Type: Volt Free Pair (Relay)
- Connection Type: Screw Terminals (captive screw with self raising terminal washers)
- Accuracy: +/- 0.25s / day @ 25°C

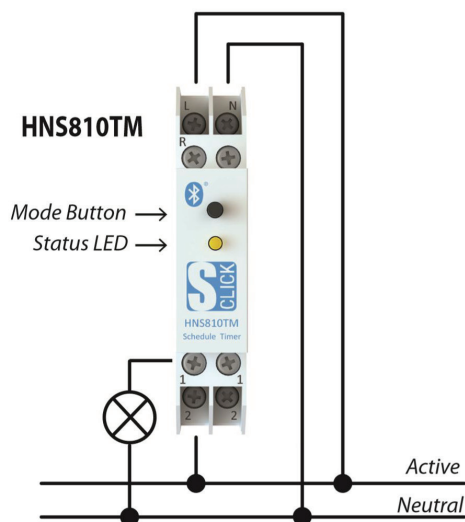
S-Click iOS Application: Search 'S-Click' in the App Store to find and then download the S-Click iOS application. The S-Click application is required to setup the device and set timers. The device can not be configured from the device itself. The S-Click iOS App can be used to adjust all device settings and set up to 70 programs.

Wiring

- Disconnect power at the circuit breaker before any electrical work.
- Wiring connections as shown above.



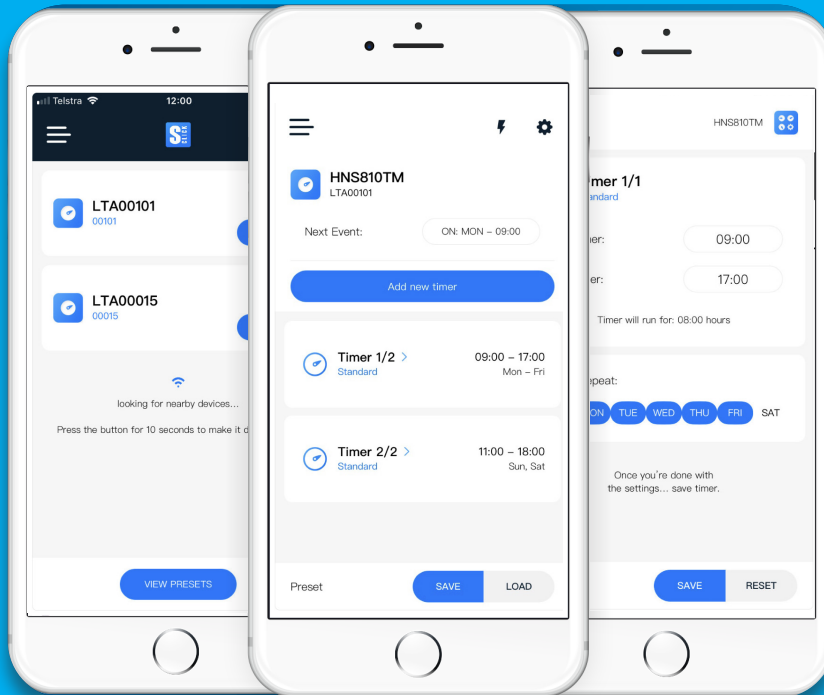
HNS810TM CONNECTION EXAMPLE



7 Day/24 hour
Standard timer mode as well as
pulse mode 10 years power reserve



Download The S-Click App Today



EASY TO USE
Conveniently program your devices.



OTA FIRMWARE UPGRADE
Through the app.



70 DAILY ON/OFF PROGRAMS
Allowing 980 possible memory spaces.



DAYLIGHT SAVINGS FUNCTION
On by default.



SERVICE COUNTER
With 4 parameters.

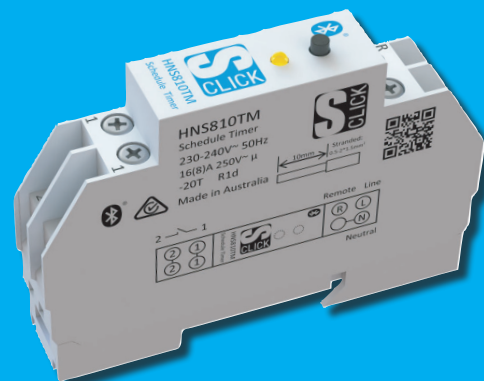


PULSE MODE FUNCTION

CONVENIENCE AT YOUR FINGERTIPS

The S-Click app enables you to easily configure and control Bluetooth enabled S-Click devices, such as the HNS810TM.

- Quickly test the circuit and load with the quick test function
- Set multiple simple timers to create the schedule
- Configure the device settings to suit the user
- Update the device firmware as new features are released
- Save and load device presets in the app easy multi-site setup



In support of our policy of continuous product improvement we reserve the right to change materials and specifications without notice. Drawings, where shown, may not be to scale. Dimensions are metric and size may be approximate. Where possible data sheets including MSDS are made available on our website and APPs. All products should be installed and used in accordance to manufacturer's instruction provided. Warning: products may be subject of registered designs and patents. Refer to our website or APPs for terms and conditions on warranty. Every effort has been made to ensure accuracy of content. However no liability will be met by Legend Corporation or its suppliers for any errors or omissions. Product data and information is no binding. All brands and logos are registered trademarks and are subject to copyright laws. No part of this catalogue can be reproduced without the consent of Legend Corporation.



Ripple Filters

S-CLICK RIPPLE FILTERS

750Hz / 1050Hz RIPPLE SIGNAL FILTER

Unit: EA Qty: 1

Part No. HNS030RF-750 / HNS030RF-1050



- Simple and easy to install
- Guaranteed, ripple signal flicker free with S-Click dimmers
- Works with LED, halogen, CFL and incandescent lamps
- Designed to fit through downlight hole
- Compatible to South East QLD and SYD

smart switch TECHNOLOGY



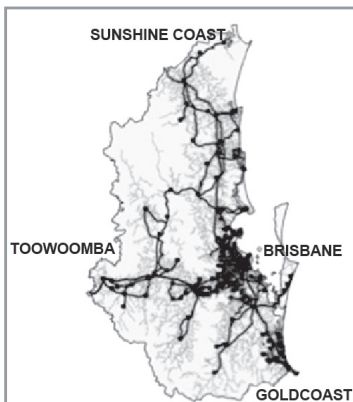
RIPPLE SIGNAL FREQUENCY MAPS

QLD

- Only Southern Queensland (Energex) has Ripple Signalling
- The Frequency is 1050Hz. Use the HNS030RF-1050 for this area.
- The rest of Queensland (Ergon) does not have Ripple Signalling

NOTE: Some areas of Muswellbrook are 492Hz and the HNS030RF will not work for that frequency

NOTE: The entire area of St George is 492Hz and the HNS030RF will not work for that frequency



NSW

HNS030RF-1050

Newcastle

Central Coast

Dee Why

HNS030RF-750

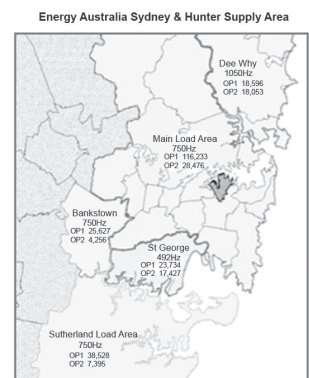
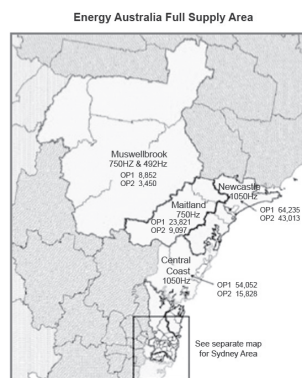
Muswellbrook

Maitland

Sydney - Main Load Area

Bankstown

Sutherland



Accessories

S-CLICK BUTTONS



- Buttons to compliment the S-Click range of Switches and Dimmers
- Pack Qty: 10
- Knobs and bezels are also available



Part No.	Description	Unit	Qty
HNSBTNCPWHT	BUTTON SUIT CLIPSAL ELECTRIC WHITE	PAK	10
HNSBTNCPBLK	BUTTON SUIT CLIPSAL BLACK	PAK	10
HNSBTNHMBLK	BUTTON SUIT HPM EXCEL BLACK	PAK	10
HNSBTNHMWHT	BUTTON SUIT HPM EXCEL ELECTRIC WHITE	PAK	10

S-CLICK USB MECH BEZELS



- Buttons to compliment the S-Click range
- Pack quantity: 10
- Knobs and buttons are also available



Part No.	Description	Unit	Qty
HNSBZLCPWHT	BEZEL SUIT CLIPSAL ELECTRIC WHITE	PAK	10
HNSBZLCPBLK	BEZEL SUIT CLIPSAL BLACK	PAK	10
HNSBZLCPBRL	BEZEL SUIT CLIPSAL BRILLIANT WHITE	PAK	10
HNSBZLHMWHT	BEZEL SUIT HPM ELECTRIC WHITE	PAK	10
HNSBZLHMBLK	BEZEL SUIT HPM EXCEL BLACK	PAK	10
HNSBZLLFWHT	BEZEL SUIT HPM EXCEL LIFE ELECTRIC WHITE	PAK	10
HNSBZLLFBLK	BEZEL SUIT HPM EXCEL LIFE BLACK	PAK	10

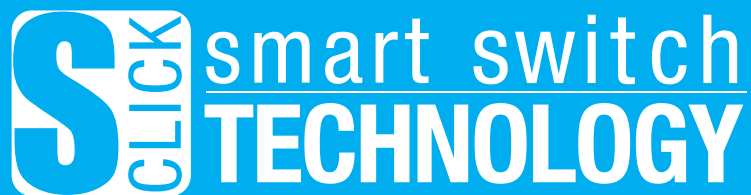
S-CLICK KNOBS



- Knobs to compliment the S-Click range of dimmers
- Pack quantity: 10
- Bezels and buttons are also available



Part No.	Description	Unit	Qty
HNSKNBCPWHT	KNOB SUIT CLIPSAL ELECTRIC WHITE	PAK	10
HNSKNBCPBLK	KNOB SUIT CLISPAL BLACK	PAK	10
HNSKNBPDWHT	KNOB SUIT PDL WHITE	PAK	10
HNSKNBCBWHT	KNOB SUIT CABAC ELECTRIC WHITE	PAK	10
HNSKNBCBBLK	KNOB SUIT CABAC BLACK	PAK	10
HNSKNBSNSVR	KNOB SUIT SATURN INCLUDING RING	PAK	10
HNSKNBZNWHT	KNOB SUIT SATURN ZEN ELECTRIC WHITE	PAK	10
HNSKNBHMWHT	KNOB SUIT HPM EXCEL ELECTRIC WHITE	PAK	10
HNSKNBHMBLK	KNOB SUIT HPM BLACK	PAK	10



For further information please visit
cabac.com.au

Part No. SCLICK-A4-BROCHURE



9 359736 015422

Tel: 133 122

In support of our policy of continuous product improvement we reserve the right to change materials and specifications without notice. Drawings, where shown may not be to scale. Dimensions are metric and size maybe approximate. Where possible data sheets including MSDS are made available on our website and APPs. All products should be installed and used in accordance to manufacturer's instruction provided. Warning: products may be subject of registered designs and patents. Refer to our website or APPs for terms and conditions on warranty. Every effort has been made to ensure accuracy of content. However no liability will be met by Legend Corporation or its suppliers for any errors or omissions. Product data and information is not binding. All brands and logos are registered trademarks and are subject to copyright laws. No part of this catalogue may be reproduced without the consent of Legend Corporation.