

# ARCPRO Switching Suit

For more than 40 years, protective apparel made from DuPont™ Nomex® fabrics have helped provide superior thermal protection from flames, industrial fires and electric arcs. Nomex® fabrics help provide outstanding thermal performance because it does not burn or melt and drip. Nomex® fabrics provide permanent protection that won't wash out or wear away. Nomex® fabrics help minimize break-open and maintains a stable, inert barrier between the fire/arc and skin, helping to protect the wearer from direct exposure. Nomex® forms a tough, protective char when exposed to flame. Extreme Safety use Nomex® in our arc flash suits to help protect workers in the electric utility, rail, industrial, petrochemical and many other industries. Extreme Safety aims to provide the best possible products for arc flash protection to improve worker comfort without compromising safety. NFPA 70E Compliance requires wearing of whole system (3 piece) as ONE UNIT.

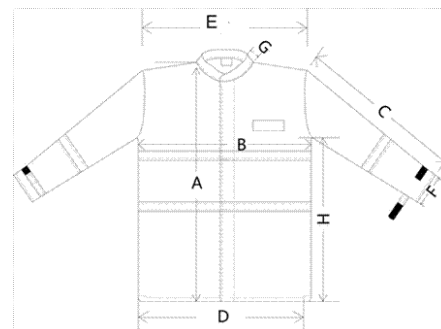
**Once a garment has been exposed to an arc flash, it must be removed from service.**

## FEATURES

- 1 x CAT 4 - 40 cal/cm<sup>2</sup> arc flash hood with dielectric type 1 hard hat (Product Code: 90-490)
- 1 x ARCPRO SWITCHING COAT 42 calories/cm<sup>2</sup> (Product Code: 92-488-\*\*-\*\*, \*\* = size)
- 1 x CAT 4 - 40 cal/cm<sup>2</sup> arc flash leggings (Product Code: 90-489)
- Nomex® flame retardant fabric
- Double safety stitched seams with flame resistant sewing thread
- Sizes; L, XL, XXL, 3XL & 4XL



Size	Chest (B)	Length (A)
Large	62cm	130cm
XL	65cm	130cm
2XL	68cm	130cm
3XL	71cm	130cm
4XL	74cm	130cm



## COMPLIANCE

Complies to NFPA 70E CAT 4 - 40 calories/cm<sup>2</sup>

Part No.	Description
92-488-SUIT-L	ARCPRO SWITCHING SUIT L 42 calories/cm <sup>2</sup>
92-488-SUIT-XL	ARCPRO SWITCHING SUIT XL 42 calories/cm <sup>2</sup>
92-488-SUIT-XXL	ARCPRO ARC FLASH SUIT XXL 42 calories/cm <sup>2</sup>
92-488-SUIT-3XL	ARCPRO SWITCHING SUIT 3XL 42 calories/cm <sup>2</sup>
92-488-SUIT-4XL	ARCPRO SWITCHING SUIT 4XL 42 calories/cm <sup>2</sup>

In support of our policy of continuous product improvement we reserve the right to change materials and specifications without notice. Drawings, where used, are not to scale. All dimensions are in millimetres and sizes given are approximate. Where possible, technical MSDS data sheets are made available on the website. All products should be installed and used in accordance with manufacturer's instructions provided. Warning: products may be the subject of registered designs and patents. Refer to website for terms and conditions on warranty.