

## PVC CORRUGATED CONDUIT MEDIUM DUTY GREY

### Description

Tripac Medium Duty Electrical Corrugated Conduit is a high-quality polyvinyl chloride (PVC) conduit designed to provide excellent flexibility, strength and protection for your wiring and cables. It is specifically engineered to meet the demands of above-ground electrical applications, offering superior resistance to impact, water, weather, chemicals, and corrosive environments.

### Features & Benefits

- High-quality PVC construction ensures durability and longevity.
- Excellent flexibility allows for easy installation in complex setups.
- Provides superior protection for electrical cables and wiring.
- UV stabilized to withstand prolonged exposure to sunlight and outdoor conditions.
- Non-flame propagating for enhanced safety.
- Conforms to AS/NZS 2053.5:2001
- Lead and mercury-free formula.
- BEP certified for environmental compliance.
- Compression strength exceeding 750N.

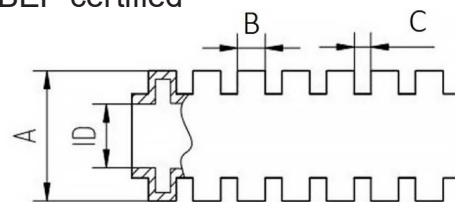


### Product Specifications:

- Type: Medium Duty (MD)
- Colour: Grey
- Conduit Material: Polyvinyl Chloride (PVC)
- Temperature Range: -5°C to 60°C
- UV Resistance: Yes
- Flame Retardant: Yes
- Compression Strength: >750N
- Conforms to: AS/NZS 2053.5:2001
- BEP certified



### Technical Information



Part No.	DESCRIPTION	ID (MM)	A (MM)	B (MM)	C (MM)
CC1650	16mm Corrugated Conduit 50m	11.5	16	2.4	1.2
CC2010	20mm Corrugated Conduit 10m	15	20	2.6	1.2
CC2020	20mm Corrugated Conduit 20m	15	20	2.6	1.2
CC2050	20mm Corrugated Conduit 50m	15	20	2.6	1.2
CC2510	25mm Corrugated Conduit 10m	18.5	25	2.8	1.3
CC2520	25mm Corrugated Conduit 20m	18.5	25	2.8	1.3
CC2550	25mm Corrugated Conduit 50m	18.5	25	2.8	1.3
CC3210	32mm Corrugated Conduit 10m	25	32	3.3	1.5
CC3225	32mm Corrugated Conduit 25m	25	32	3.3	1.5
CC4010	40mm Corrugated Conduit 10m	32	40	3.5	1.5
CC4025	40mm Corrugated Conduit 25m	32	40	3.5	1.5
CC5010	50mm Corrugated Conduit 10m	42	50	3.5	1.5
CC5025	50mm Corrugated Conduit 25m	42	50	3.5	1.5

### Applications:

Tripac Medium Duty Corrugated Conduit is suitable for a wide range of applications, including but not limited to:

- Protection and routing of electrical wiring in above-ground installations.
- Residential electrical installations.
- Industrial and commercial electrical systems.
- Outdoor electrical projects.

In support of our policy of continuous product improvement we reserve the right to change materials and specifications without notice. Drawings, where used, are not to scale. All dimensions are in millimetres and sizes given are approximate. Where possible, technical MSDS data sheets are made available on the website. All products should be installed and used in accordance with manufacturer's instructions provided. Warning: products may be the subject of registered designs and patents. Refer to website for terms and conditions on warranty.

## PVC CORRUGATED CONDUIT MEDIUM DUTY GREY

### Ordering Information

PART No.	DESCRIPTION	SIZE	WEIGHT
CC1650	16mm MD GREY	28x28x14cm	2.30kg
CC2010	20mm MD GREY	30x30x12cm	0.75kg
CC2020	20mm MD GREY	34x34x13cm	1.50kg
CC2050	20mm MD GREY	40x40x20cm	3.75kg
CC2510	25mm MD GREY	33x33x14cm	1.05kg
CC2520	25mm MD GREY	37x37x15cm	2.10kg
CC2550	25mm MD GREY	42x42x25cm	5.25kg
CC3210	32mm MD GREY	37x37x13cm	1.30kg
CC3225	32mm MD GREY	46x46x20cm	3.25kg
CC4010	40mm MD GREY	39x39x16cm	1.90kg
CC4025	40mm MD GREY	50x50x22cm	4.75kg
CC5010	50mm MD GREY	45x45x17cm	2.60kg
CC5025	50mm MD GREY	56x56x26cm	6.50kg



Mercury & Lead  
Free



UV  
Stabilised



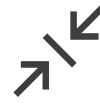
Non-Flame  
Propagating



Operating  
Temperature  
-5°C to 60°C



Conforms to  
AS/NZS  
2053.5:2001



>750N  
Compression  
Strength



### Installation Guidelines:

- Ensure that the conduit is cut to the required length using appropriate tools.
- Clean the conduit ends and fittings before installation.
- Connect the conduit using compatible fittings and secure them tightly.
- Route the electrical wiring through the conduit, ensuring proper organization and support.
- Fasten the conduit securely using suitable clamps, brackets, saddles etc.

In support of our policy of continuous product improvement we reserve the right to change materials and specifications without notice. Drawings, where used, are not to scale. All dimensions are in millimetres and sizes given are approximate. Where possible, technical MSDS data sheets are made available on the website. All products should be installed and used in accordance with manufacturer's instructions provided. Warning: products may be the subject of registered designs and patents. Refer to website for terms and conditions on warranty.